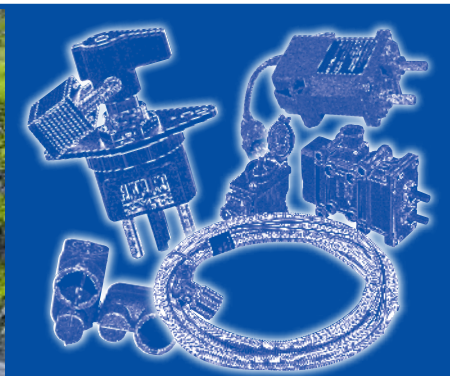




PROTECT YOUR FLEET



BATTERY CONTROL SAFETY SYSTEMS

Automatic



www.flamingriver.com

Flaming River Industries, Inc.[®]
800 Poertner Dr. Berea, Ohio 44017

Manual



440-826-4488 • Fax 440-826-0780
Toll Free 1-800-648-8022

About Flaming River Industries, Inc.®

Flaming River Industries, Inc.® is an Ohio corporation and woman-owned business, located in Berea, Ohio. As we celebrate our 30th year in business, we are proud of the battery disconnect switches and accessories that we provide to the heavy-duty and commercial trucking industries.

Flaming River Industries is well-known for our battery disconnect switches, and over the course of many years of service, The Big Switch has become an industry standard as it relates to safety and OSHA Regulation 1910.147 for lock-out/tag-out in heavy-duty and commercial vehicle applications.

We are continuing our pledge to provide our customers with the highest quality battery disconnect switches, with the introduction of The Big Switch 500. The Big Switch 500 is Flaming River Industries' response to the increasing demands for higher continuous current requirements within the commercial vehicle industry. The Big Switch 500 was designed from the ground up as a more rugged and powerful product capable of handling 500 Amps continuously. The Big Switch 500 was designed right here in Northeast Ohio, and is built and assembled in the USA.

We also proudly distribute and carry a series of automatic battery disconnect switches that focus on convenience, battery preservation, and fleet safety. The Electro Wizard® has proven to be a dependable and irreplaceable component for large vehicles and heavy-duty equipment. Our newest products—the Low-Voltage Disconnect Switch and Watch Dog®, join the ranks of our expanding list of automatic battery disconnect switches. The Watch Dog® can run continuously at 300 Amps and includes features like bi-stable “magnetic latch” technology, a built-in programmable time delay, and an external emergency shut-off switch making battery disconnection simpler and safer than ever. The technologies of the automatic battery disconnect switches and original Big Switch is supplied by a well-known Italian manufacturer.

Flaming River Industries is certified in ISO 9001:2008 Quality Management Systems standards. By adhering to ISO's 9001 quality standards, Flaming River Industries' manufacturing processes and products are certified to world-class specifications for quality, safety and efficiency. We are also certified in ISO 14001:2004 Environmental Management Systems. This certification ensures that Flaming River Industries minimizes its impact on the environment and complies with all applicable and statutory regulatory requirements.

For 30 years, we have designed many award-winning products using state-of-the-art engineering, technology, and quality control in our manufacturing processes. We continue to expand in the heavy-duty market with advanced electrical and safety devices designed to meet and exceed our customers' needs. Although this process is exciting, we know that the best reward is a satisfied customer.



**Flaming River Industries, Inc.® • 800 Poertner Dr. Berea, Ohio 44017
440-826-4488 • Fax 440-826-0780 • Toll Free 1-800-648-8022**

Table of Contents



Flaming River® Heavy Duty

Battery Disconnect Switches

500 Amp

Big Switch 500.....	4-5
---------------------	-----



250 Amp

XL Terminal Big Switch	6
The Big Switch w/LED Indicator.....	7
The Big Switch	8
The Big Switch w/Extension Kit	9
The Big Switch w/Removable Key	10



350 Amp

HD Amp w/Terminal Covers	11
--------------------------------	----



Automatic

Watch Dog®	12-13
Electro Wizard®	14



Low Voltage Switch	15
--------------------------	----



Combination Battery/Alternator Switch	16
---	----



The Little Switch/ Dual Battery Switch	17
--	----



Electrical Accessories	18
------------------------------	----



Ordering Information.....	19
---------------------------	----

***Help Protect Your Truck Against
Electrical Fire, Theft, and Battery Drain***

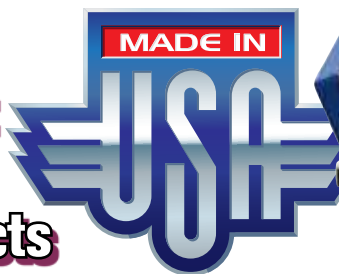
500 Amp Battery Disconnect Switch

FR1046 The Big Switch 500
with Lock-Out Bracket

FR1047 The Big Switch 500
Lock-Out Hole with Lever Handle
w/ Retrofit Diamond Bracket



- **500 Amps**
- **Durable High-Impact Molded Body**
- **Riveted Design**
- **Waterproof and Corrosion-Resistant**
- **Silver-Plated Studs**
- **Silver-Plated Contacts**
- **MADE IN USA**



Heavy-duty battery disconnect switch with 500 amp rating. Silver pads and terminals and glass nylon material provide impact and temperature resistance. New waterproof/corrosion-resistant design. Made in USA.

Features and Benefits:

- Heavy-duty battery disconnect switch that boasts a 500 amp continuous rating
- Silver pads and terminals provide higher rating.
- Innovative glass-filled nylon material is impact and extreme temperature resistant
- Sealed waterproof and corrosion-resistant design
- Can withstand extreme vibration—making it ideal for racing and heavy-duty truck applications
 - Optional lock-out feature allows switch to be locked in the OFF position to comply with OSHA lock-out/tag-out regulation 1910.147
 - Made in the USA with American-made components and materials



FR1046LED
w/ LED Indicator



Lock Not Included



Corrosion-Resistant
Nickel-Plated Brass Fasteners

Voltage	12V/24V
Max Continuous Current	500 Amps
Environmental Protection Rating	IP65
Corrosion Resistant	Yes
Operating Temperature	-40°F to + 176°F (-40°C to +80°C)
Switch Body Material	Glass-filled nylon
Internal Contacts	AgSnO2 (Silver Tin Oxide) Plated Copper
Contact Terminals	AgSnO2 (Silver Tin Oxide) Contacts
Stud Diameter	M10
Available Stud Length	1.18 in (1-3/16 in)
Contact Hardware	Nickel-plated brass
M10 Tightening Torque	11-13 ft-lbs

Note: Terminals on battery disconnect switches are live parts of the electrical system and should be treated just like battery terminals. Covers are recommended, but not included, for each kit. Contact your vehicle's manufacturer to determine proper placement and suitability.

**Maximum
Corrosion
Protection**

Lock-out Ready

Non-Corrosive
Plunger Assembly

M30
Diameter

Dual Springs/
Vibration
Resistant

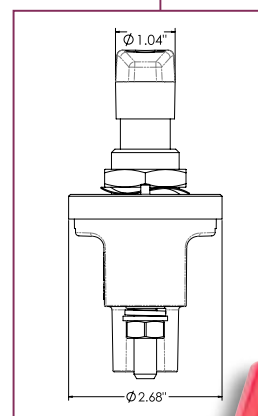
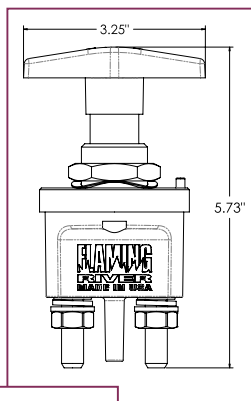
Sealed and
Corrosion-
Resistant

High Amp
Silver
Contacts

Silver-Plated
Copper Terminals

High-Impact
Molded Material

Terminal Diameter: M10, Terminal Length: 1-3/16"



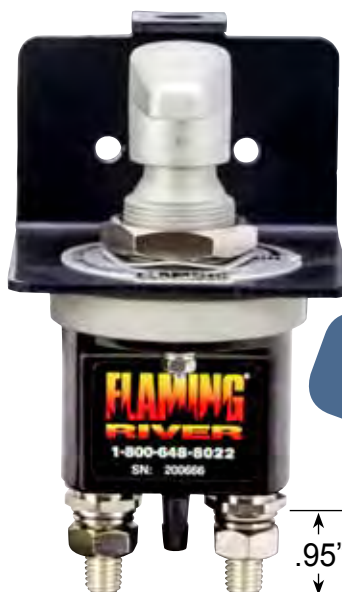
Lock Not Included.
Shown for
representation
purposes only



250 Amp Battery Disconnect Safety Switches

250 Amp

FR1044 New XL Terminal Big Switch Battery Disconnect Switch



- INCREASED TERMINAL SPACE
- 250 Amps continuous service
- 2500 Amps for 5 second intervals (12V/24V)
- silver-plated copper electrical contacts
- nickel-plated brass hardware
- completely sealed, waterproof design
- three (3) year warranty
- Complies with OSHA lock-out/tag-out regulation 1910.147

Longer Stud Length for
Easier Cable Installation

.95"

Warranty	3 Years
Voltage	12V/24V
Max Continuous Current	250 Amps
Max Surge Current	2500 Amps
Environmental Protection Rating	IP65
Waterproof	Yes
Operating Temperature	-40°F to + 176°F (-40°C to +80°C)
Contact Terminals	Silver-Plated Copper
Contact Hardware	Nickel-Plated Brass
Stud Diameter	M10
Available Stud Length	.95 in (approx. 61/64 in)
Max Tightening Torque	11-13 ft-lbs



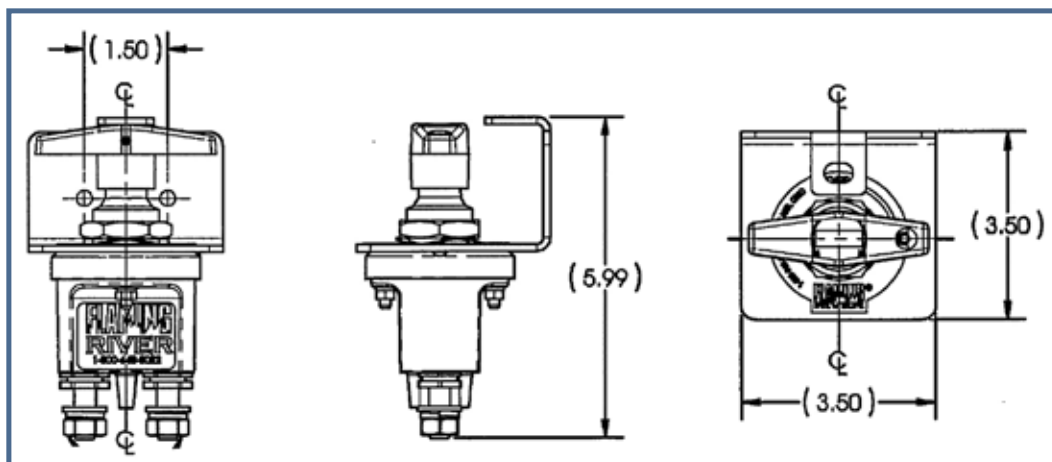
Nickel-Plated Brass fasteners
for corrosion resistance



Lock Not Included

FR1014TM Terminal Covers for Grooved Terminal Stud

Sold in sets of two. Can be used to cover cables on all Battery Disconnect Switches. Sold separately from switch.

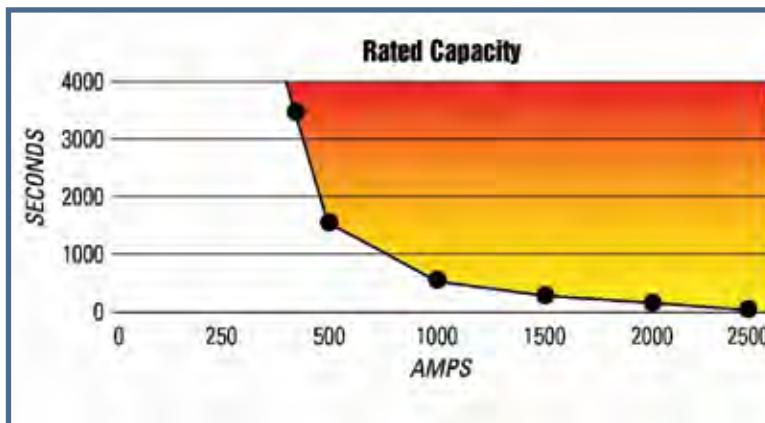


FR1044LED Big Switch Battery Disconnect with LED Indicator

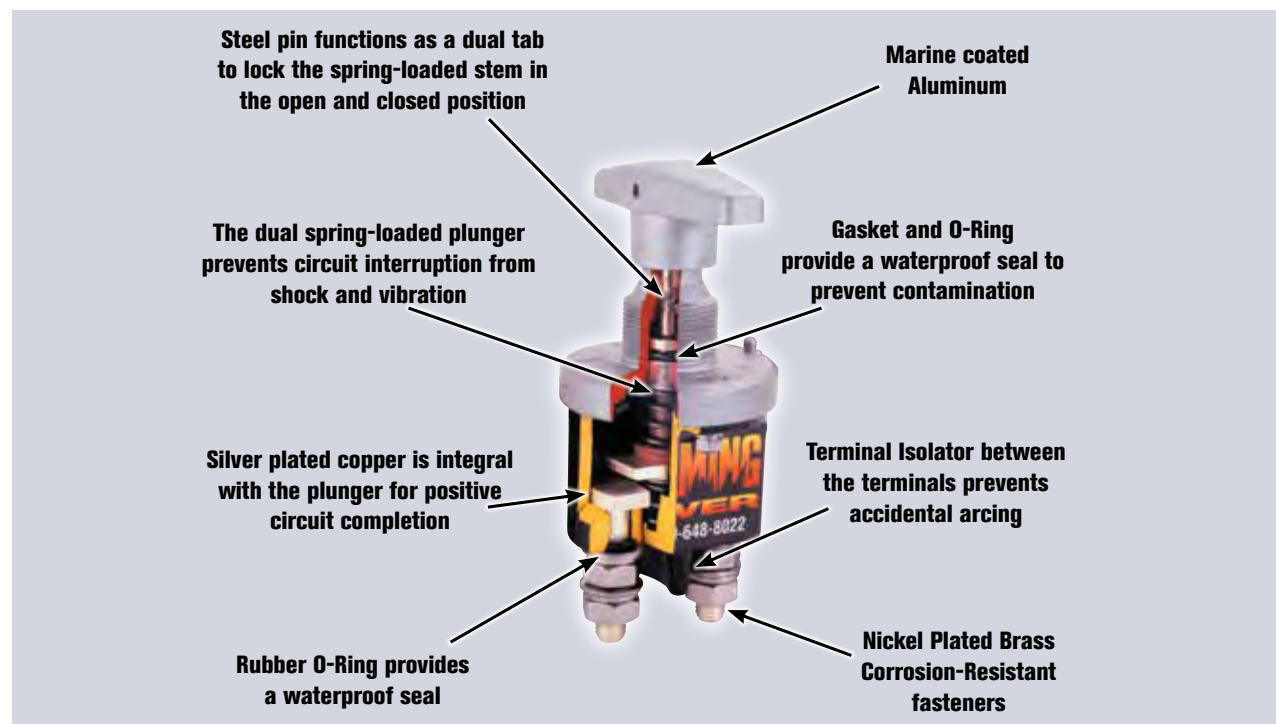
The Big Switch is now available with an illuminated LED that provides a visual cue that easily identifies whether the switch and electrical system are ON or OFF for proper shut down procedure.

- LED Indicator Light - Clear indicator that system is ON or OFF
- Rated Capacity 2500 Amps / 250 continuous
- Stainless Steel Fasteners for corrosion resistance
- Waterproof
- Silver-plated copper internal contact plates
- M10 studs
- Lock-out feature enables use of padlock for OSHA Lock-out/Tag-Out compliance regulation 1910.147

Part No.	Description
FR1044LED	Big Switch Battery Disconnect with LED Indicator
FR1008LED	Lock-Out Bracket and LED Indicator only (for retrofit to existing "Big Switch")



Note: Terminals on battery disconnect switches are live parts of the electrical system and should be treated just like battery terminals. Covers are recommended, but not included, for each kit. Contact your vehicle's manufacturer to determine proper placement and suitability.

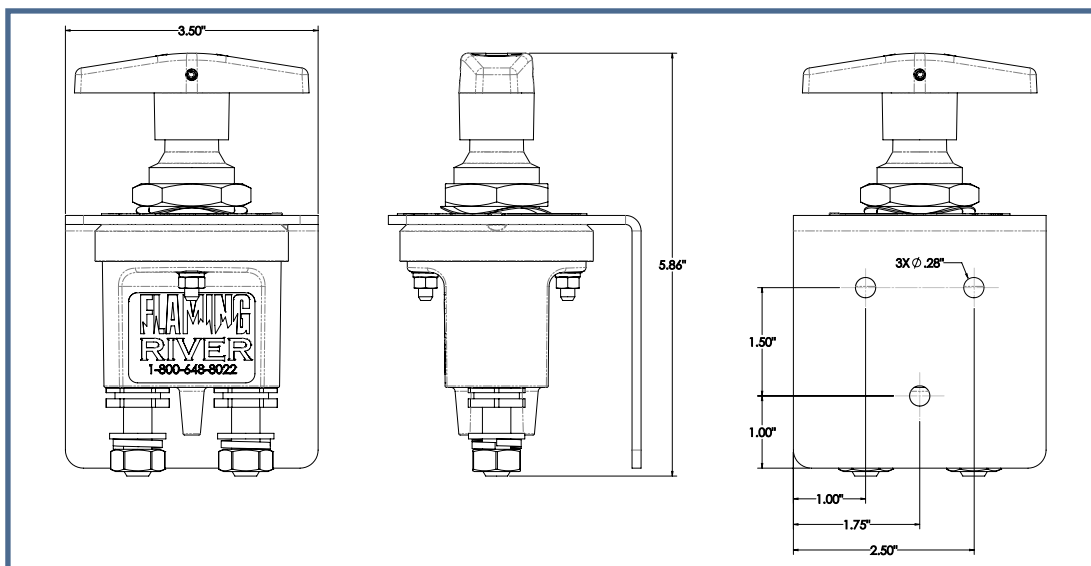


250 Amp Battery Disconnect Safety Switches

FR1003 The Big Switch Battery Disconnect Switch

Top racers realize that using a low amp switch creates resistance and actually reduces power. Flaming River's® heavy duty battery disconnect switch is top of the line designed for complex electrical systems and 16 Volt batteries.

- Rated at 250 amps continuous service (12V/16V/24V) and 2500 amps for 5 second surges.
- Spring-loaded, vibration-resistant, waterproof design.
- Accepted by most sanctioning bodies including IHRA/NHRA.
- Furnished with an easy-grip T-handle, anodized aluminum bracket and zinc-plated mounting hardware.



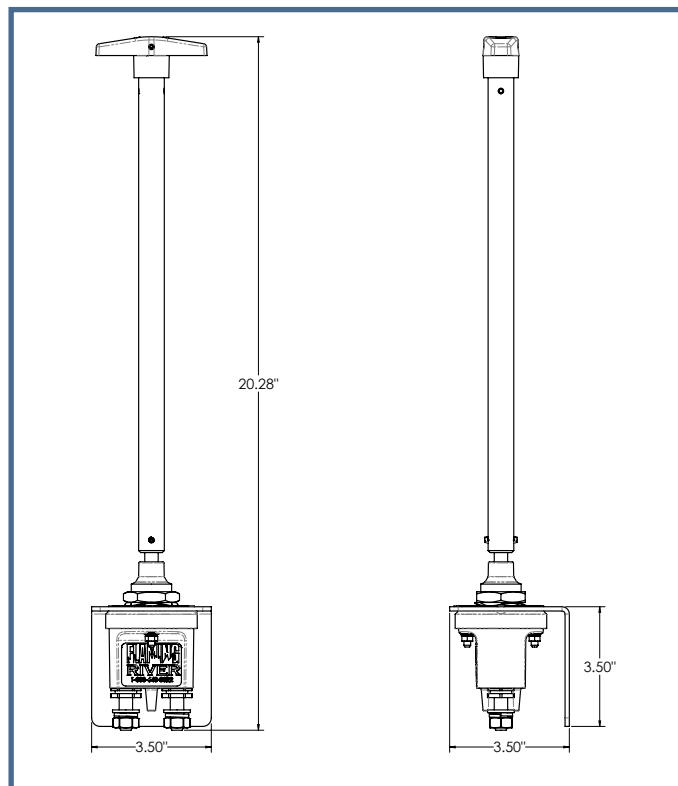
Description	The Big Switch
Part No.	FR1003
Warranty	3 Years
Voltage	12V/24V Max
Continuous Current	250 Amps
Max Surge Current	2500 Amps (5 seconds)
Environmental Protection Rating	IP65
Waterproof	Yes
Operating Temperature Range	-40°C to +80°C-40°F to +176°F
Contact Terminals	Silver Plated Copper

Contact Hardware	Nickel Plated Brass
Stud Diameter	M10 Available
Stud Length	0.775" (approx. 25/32 in)
Max Tightening Torque	11-13 ft-lbs
Mounting Bracket Included	Yes
Mounting Bracket Part No.	FR1007
Terminal Covers Included	No
Terminal Covers Part No.	FR1003TM (pair)
Additional Notes	Approved for NHRA/IHRA competition use

FR1003-4 The Big Switch with Extension Kit FR1003-EXT Extension Only

This industrial lever kit allows for remote mounting of the Big Switch. Kit includes a custom 15" aluminum rod, handle, and the FR1003 Big Switch.

- Rated at 250 amps continuous service (12V/16V/24V) and 2500 amps for 5 second surges.
- Spring-loaded, vibration-resistant waterproof design.
- Accepted by most sanctioning bodies including IHRA/NHRA.
- Furnished with an easy-grip T-handle, anodized aluminum bracket and zinc-plated mounting hardware.



Note: Terminals on battery disconnect switches are live parts of the electrical system and should be treated just like battery terminals. Covers are recommended, but not included, for each kit.

Contact your vehicle's manufacturer to determine proper placement and suitability.



FR1003TM Terminal Covers

Sold in sets of two. Can be used to cover cables on all Battery Disconnect Switches. Sold separately from switch.



Compare The Difference		
Feature	Flaming River® Heavy Duty Switch	Brand X
Rating (12V/16V/24V)	250 Amps Continuous	20 Amps
Rating Surge (12V/16V/24V)	2500 Amps	125 Amps
Waterproof	Yes	No
Silver Plated Terminal	Yes	No
Design	Spring Loaded	Rotary
Weight	17 oz.	14 oz.
Warranty	3 Years	None

250 Amp Battery Disconnect Safety Switches

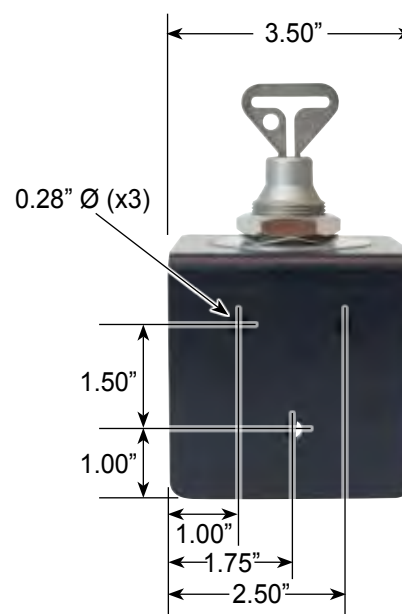
FR1009 The Big Switch with Removable Key

The Big Switch with removable laser cut, stainless steel key enhances the security and safety features available with the Big Switch. This unit is rated at 250 amps continuous service and 2500 amps for 5 second intervals (12V / 24V) It is a heavy duty, waterproof switch. The removable key feature is ideal for construction, farm equipment and passenger cars. An absolutely essential theft deterrent.



Description	The Big Switch with Removable Key
Part No.	FR1009
Warranty	3 Years
Voltage	12V/24V
Max Continuous Current	250 Amps
Max Surge Current	2500 Amps (5 seconds)
Environmental Protection Rating	IP65
Waterproof	Yes
Operating Temperature Range	-40°C to +80°C -40°F to +176°F
Contact Terminals	Silver Plated Copper
Contact Hardware	Nickel Plated Brass
Stud Diameter	M10 Available
Stud Length	0.775" (approx. 25/32 in)
Max Tightening Torque	11-13 ft-lbs
LED ON/OFF Indicator	No
Lock-Out Capability	Yes - Removable Key
Replacement Key Part No.	FR1009K
Mounting Bracket Included	Yes
Mounting Bracket Part No.	FR1007
Terminal Covers Included	No
Terminal Covers Part No.	FR1003TM (pair)

Note: Terminals on battery disconnect switches are live parts of the electrical system and should be treated just like battery terminals. Covers are recommended, but not included, for each kit. Contact your vehicle's manufacturer to determine proper placement and suitability.



350 Amp Battery Disconnect Safety Switches

FR1043 HD Amp Battery Disconnect Switch with Terminal Covers

This heavy-duty battery disconnect switch, with larger diameter terminal studs, is ideal for Class 8 Trucks, RVs, Chippers and other construction vehicles. Clip-on terminal covers are designed to protect against arcing. Proprietary brass attaching nut allows 180 degree rotation. Higher Amp capacity – 2500 amps/350 continuous.

- Waterproof
- Silver-plated copper internal contact plates
- Increased insulation to H Class rating
- Larger diameter studs – .4725 inch (M12)
- Longer studs – 1.25" to allow easier double cable connection
- Stainless Steel Fasteners for corrosion-resistance
- LED option: Illuminated LED indicates whether system is on or off
- Lock-out option: Enables use of padlock for security

Also available with LED Indicator **FR1043LED**

Warranty	3 Years
Voltage	12V/24V
Max Continuous Current	350 Amps
Max Surge Current	2500 Amps
Environmental Protection Rating	IP65
Waterproof	Yes
Operating Temperature	-40°F to + 176°F (-40°C to +80°C)
Contact Terminals	Silver-Plated Copper
Contact Hardware	Stainless Steel
Stud Diameter	M12
Available Stud Length	1.50"
Max Tightening Torque	11-13 ft-lbs



350 Amp



FR1014TM

Terminal Covers for Grooved Terminal Stud

Sold in sets of two. Can be used to cover cables on all Battery Disconnect Switches. Sold separately from switch.

Increased insulation bushings to H class rating

Proprietary brass nut allows for 180 degree rotation

Clip-on terminal covers are designed to protect against arcing and short circuit. Terminal Covers are splash and dust proof

Thicker silver-plated copper internal contact plates

Larger diameter studs - .4725 (M12)
Longer Studs - 1.25" to allow easier double cable connection



Stainless Steel fasteners for corrosion-resistance

Automatic Battery Disconnect Safety Switches

FR1057 Watch Dog® – The Next Level Automatic Battery Disconnect Switch



The Watch Dog® is capable of handling 300 Amps of current continuously and designed with versatility in mind to function on both 12V and 24V systems. Utilizing bistable “magnetic latch” technology, the Watch Dog® secures its ON/OFF positions without current draw and requires over 80G of force to mechanically separate the contacts. The Watch Dog® has some of the highest International Protection ratings of IP76 and IP69K, ensuring that water and dust stay out. The Watch Dog® has built-in programmable time delay settings and a manual emergency toggle switch with a system status LED indicator.



Included in the package:

- Watch Dog® Main Battery Disconnect Switch
- Emergency Toggle Switch
- 4-way wire harness (8.33 feet)
- 7-way wire harness (13.25 feet)
- Momentary Push Button

Top 5 Reasons to Use Watch Dog®:

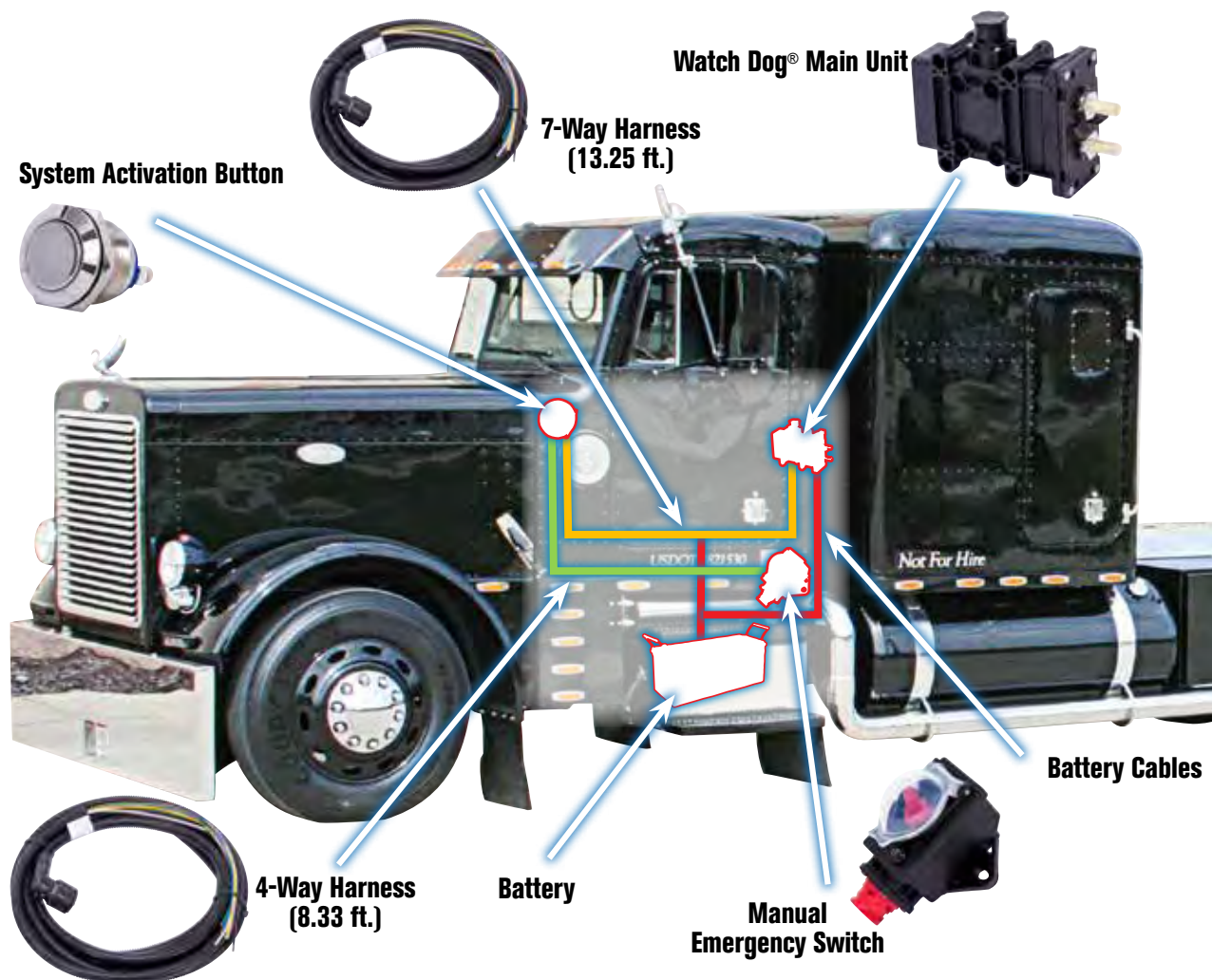
- Simplify your shutdown routine with automatic battery disconnection and a programmable time delay (default 6 min).
- Bistable “Magnetic Latch” Technology. Main switch can maintain the ON and OFF positions without current consumption.
- Max continuous current load of 300 Amps. Supports 12V and 24V systems out of the box.
- Incredibly durable. Dust and water tight, even against high pressure water jets.
- Safety is a priority with the included Emergency Toggle Switch for manual Watch Dog® control.

NOTE: The Watch Dog® system is an electromechanical battery disconnect switch. The emergency external switch will only disconnect the battery from the electrical system. This product is NOT designed to deactivate the alternator or shut down the vehicle completely.

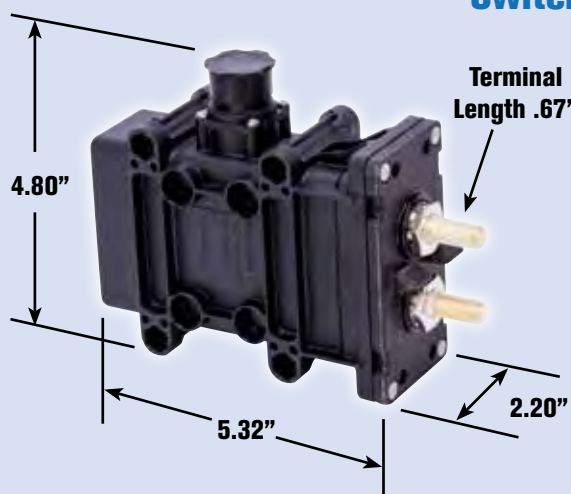
Description	300 Amp Watch Dog® Battery Disconnect
Part No.	FR1057
Voltage	12V/24V
Max Continuous Current	300 Amps
Max Surge Current	1,000 Amps (30 seconds) 2,000 Amps (5 seconds)
Environmental Protection Rating	IP67 and IP69K (water pressure cleaning)
Waterproof	Yes
Corrosion Resistance	Salt Spray Test: 300h
Terminal Length	0.670" (approx. 43/64 in)
Terminal Diameter	M10
Operating Temperature Range	-40°C to +85°C -40°F to +185°F
Internal Contacts	Silver-Plated Copper with Silver Pads
Contact Terminals	Silver-Plated Copper with Silver Pads
Contact Hardware	Nickel-Plated Brass
Automatic Shut-Off	Yes
Manual Emergency Shut-Off	Yes
Programmable Time Delay	6 Min. (Default), 3 Min., 1 Min., 30 Sec.
Battery Disconnect Mode	Positive and Negative
Terminal Covers Included	Yes

Bistable Magnetic Latch

- Bistable "Magnetic Latch" Technology. Main switch can maintain the ON and OFF positions without current consumption.
- Max continuous current load of 300 Amps.
Supports 12V and 24V systems out of the box.
- Incredibly durable. Dust and water tight, even against high pressure water jets.



Switch Dimensions



Automatic Battery Disconnect Safety Switches

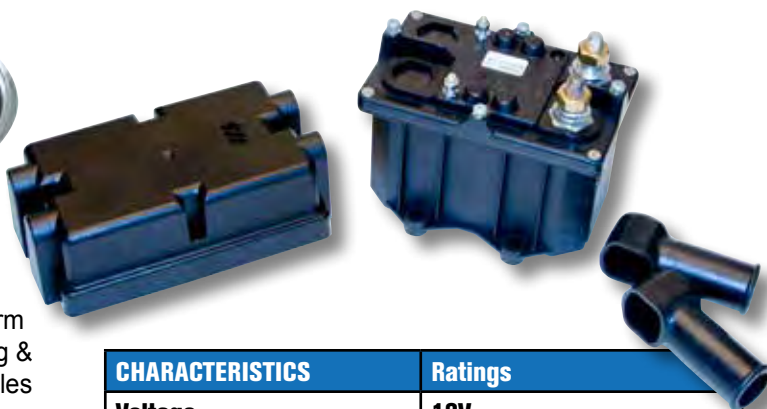
FR1051/FR1052 Electro-Wizard®

- 12 Volt Electronic Battery Disconnect Switch. 24V system available upon request.
- Passive Magnetic Solenoid Operation – No mechanical switch to forget to operate
- 250 Amps Continuous / 2500 Amp Surge
- IP 65 Rating
- Sealed Waterproof Design Can withstand severe operating condition



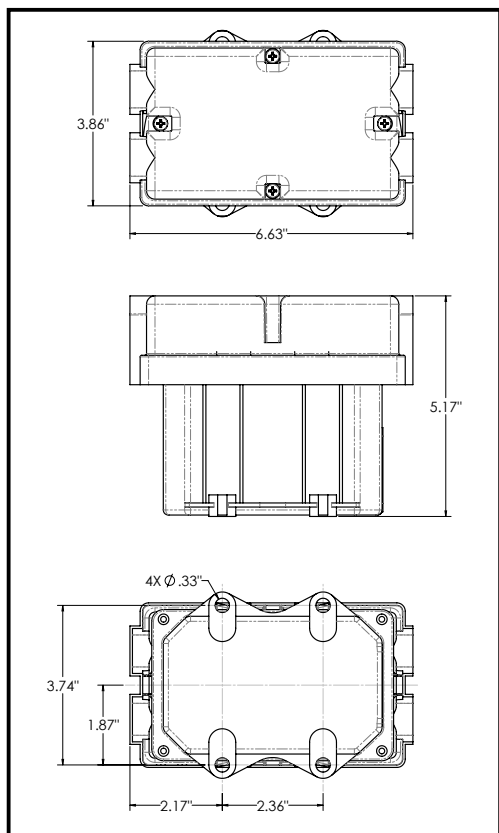
Ideal Protection For:

- Construction & Farm Equipment / Mining & Off-Highway Vehicles
- Heavy-Duty Trucks
- Automotive / Racing
- Marine
- DEF System Compatible

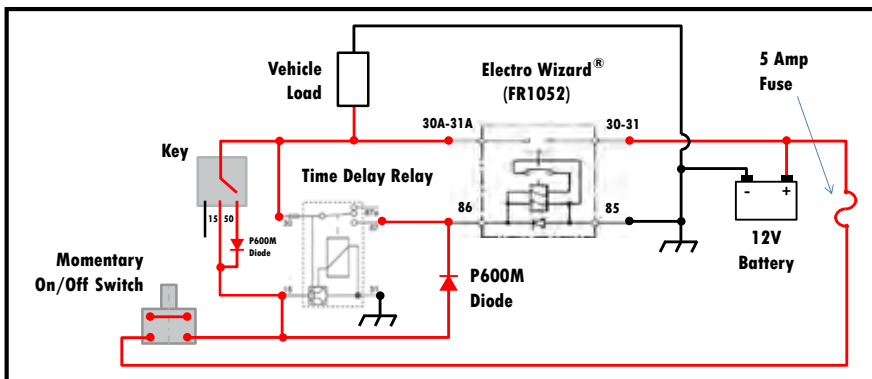


Part No.	Description
FR1051	12V Electro Wizard® - Grounded Solenoid - Uses a 12V Pos input to engage.
FR1052	12V Electro Wizard® - Insulated Solenoid with switch cover - Engagement with Pos or Neg input
FR1053	3 Minute Delay off timer relay 12V
FR1055	6 Minute Delay off timer relay 12V
FR1054	24V Electro Wizard® - Insulated Solenoid with switch cover. Engagement with Pos or Neg input

CHARACTERISTICS	Ratings
Voltage	12V
Max. Continuous current on main contacts	250 A @ (74°F / 23°C)
Max. Surge current on main contacts	2500 A for 3 sec.
Environmental Protection Rating	IP 65
Tightening torque M 10 nuts	14.75ft lb. / 20 NM
Tightening torque M 5 nuts	1.18ft lb. / 1.6 NM
Operating temperature range	-40°F - 185°F / -40°C - 40°C
Contacts	Silver plated copper
Contact Terminals	M10 tin-plated brass
Contact Hardware	Brass
Peak current coil rated input	4.4 A
Max. Retaining coil	3.2A
Holding coil rated input	0.4 A



Note: Terminals on battery disconnect switches are live parts of the electrical system and should be treated just like battery terminals. Covers are recommended, but not included, for each kit. Contact your vehicle's manufacturer to determine proper placement and suitability.



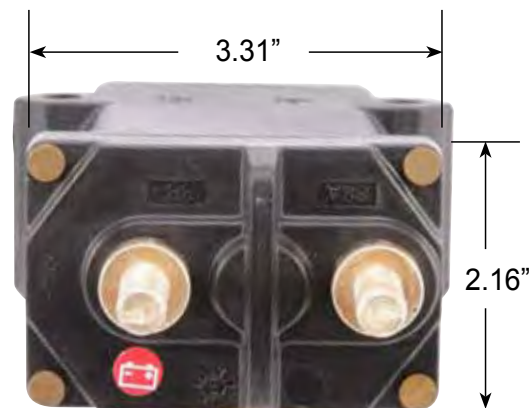
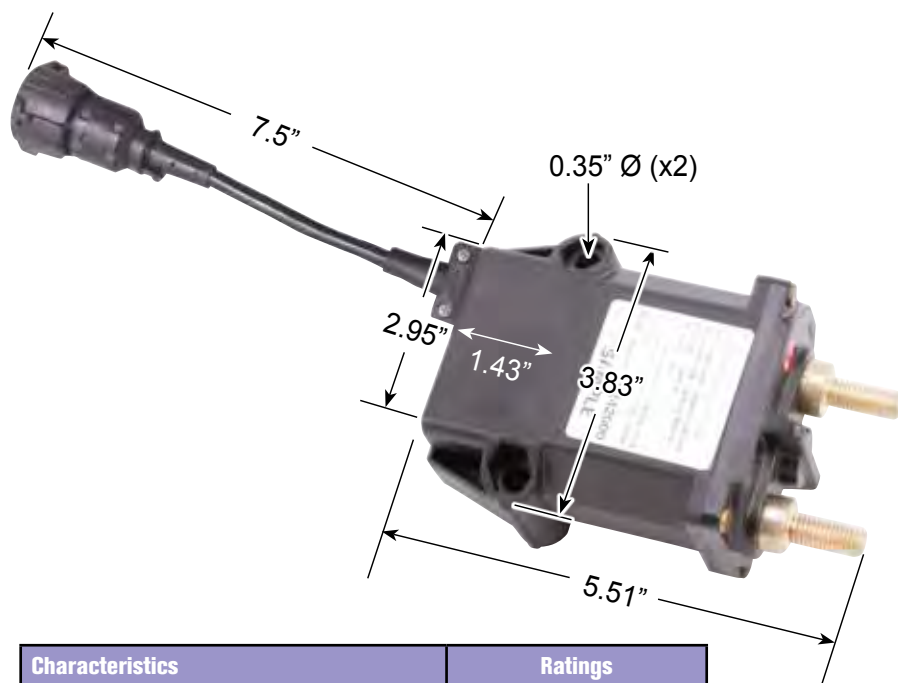
Low Voltage Switch

FR1058 Low-Voltage Battery Disconnect Safety Switch

Low Voltage

Stop battery drain with the Flaming River® Low Voltage Disconnect!

- Automatic disconnect through battery voltage measurement. Disconnects auxiliary loads when battery has drained past a specified threshold. (This is a safe battery level designed to allow the user to restart the vehicle).
- Battery charging will automatically reconnect the load
- Positive voltage from the ignition line will prevent load disconnect while the vehicle is operating
- Manual disconnect operated by dash mounted toggle ON/OFF switch
- System status can be monitored via LED indicator
- 1-3 mA current draw while monitoring battery voltage
- Thermal protection from overheating
- Environmentally-sealed device for maximum life span (IP6K7/IP69K ratings).
- Includes 4-way wire harness (13 feet long) with connections to Vehicle Ignition, Ground, Command Button, and Indicator Light



Characteristics	Ratings
Operating Voltage (Fully Charged Battery)	13.5V (12V System) 28V (24V System)
Preset Threshold Voltage	12.1V
Max Continuous Current	250 Amps
Max Surge Current	800 Amps (30 seconds) 2000 Amps (5 seconds)
Environmental Protection Rating	IP6K7/IPX9K
Corrosion Resistance	Salt Spray Test: 300 hrs
Operational Temperature	-40°F to +185°F
Time Delay	60 seconds
Contacts/Terminals	Silver Plated Copper
Terminal Dimensions	M10 (Diameter) 0.94 in. (Length)

Note: Terminals on battery disconnect switches are live parts of the electrical system and should be treated just like battery terminals. Covers are recommended, but not included, for each kit. Contact your vehicle's manufacturer to determine proper placement and suitability.

Battery and Alternator Disconnect Switch

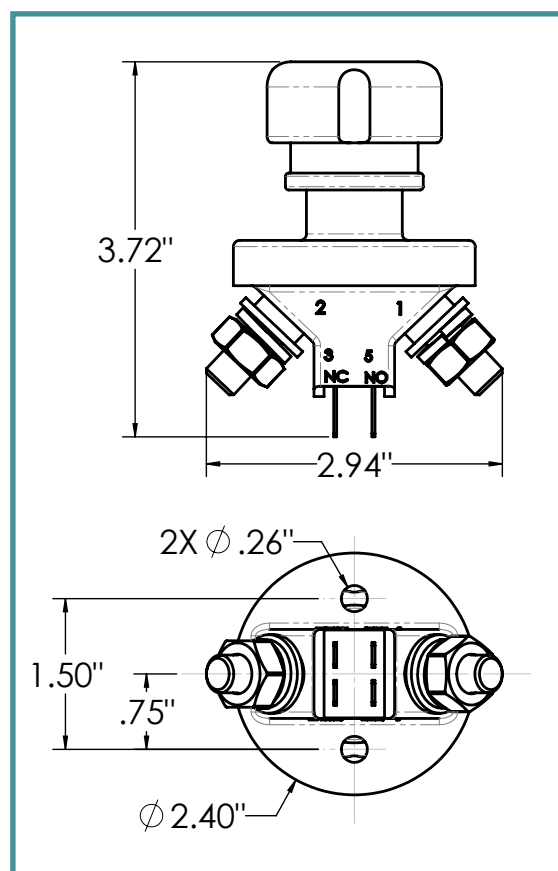
FR1013 Combination Battery and Alternator Kill Switch

This combo kill switch designed to completely shut down the battery and charging system in an emergency situation. Ideal for racing, vehicle storage, marine and RV applications. Prevents battery drain, theft, and reduces the risk of electrical fire.

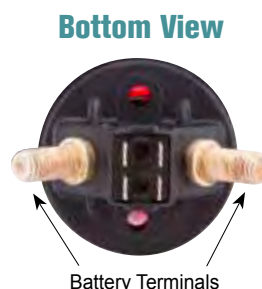
- Push Off for emergency shut-down and color-coded to indicate operating position - ON or OFF, with a durable spring-loaded design
- Meets IHRA, NHRA and SCCA sanctioning body requirements

Rated Capacity:

- Battery - 2000 Amp Surge
- 150 Amp Continuous
- Alternator - 120 Amp



Description	Combination Battery and Alternator Kill Switch
Part No.	FR1013
Warranty	1 Year
Voltage	12V/24V
Max Continuous Current	150 Amps (battery)
Max Surge Current	1,200 Amps (5 seconds)
Max Current for Auxiliary Terminals	5 Amps
Environmental Protection Rating	IP65
Alternator	120 Amps
Waterproof	Yes
Operating Temperature Range	-30°C to +60°C -22°F to +140°F
Contact Terminals	Silver Plated Copper
Contact Hardware	Brass
Stud Diameter	M10
Available Stud Length	0.813" (approx. 13/16 in)
Max Tightening Torque	11-13 ft-lbs
LED ON/OFF Indicator	No
Lock-Out Capability	No
Mounting Bracket Included	No
Protective Cover Included	No
Extension Handle/Lever	No
Additional Notes	Approved for IHRA, NHRA, and SCCA competition use



Note: Terminals on battery disconnect switches are live parts of the electrical system and should be treated just like battery terminals. Covers are recommended, but not included, for each kit. Contact your vehicle's manufacturer to determine proper placement and suitability.

Little Switch

FR1002 The Little Switch

FR1002-1 The Little Switch (No Mounting Bracket)

The Little Switch is rated at 100 amps continuous service and 500 amps for 10 second surges making it ideal for street rods, classics and passenger cars. In addition to preventing battery drain, this unique switch is also a cost effective anti-theft device. A rubber boot seals the neck from moisture and dirt.

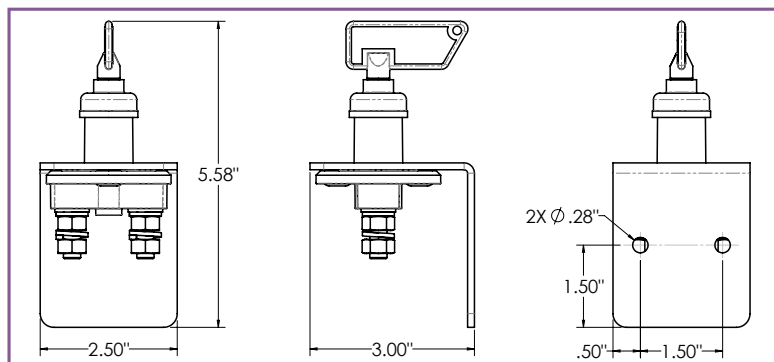
- Competition approved by IMSA, ARCA, and SCCA.
- Inexpensive Anti-theft Device • Prevents Battery Drain
- Water Resistant • Removable Key



Little Switch/Dual Switch

Part No.	FR1002
Warranty	1 Year
Voltage	6V/12V/24V
Max Continuous Current	100 Amps
Max Surge Current	500 Amps (10 seconds)
Environmental Protection Rating	IP4X
Operating Temperature Range	-40°C to +50°C, -40°F to +122°F
Contact Terminals	Copper
Contact Hardware	Zinc Plated Steel
Stud Diameter	M8
Available Stud Length	0.50"
Max Tightening Torque	4.43 ft-lbs / 6 N-m
LED ON/OFF Indicator	No
Lock-Out Capability	Yes - Removable Key
Replacement Key Part No.	FR1002K

Mounting Bracket Included	Yes
Mounting Bracket Part No.	FR1004
Protective Cover Included	Yes - Protective Rubber Boot
Protective Cover Part No.	FR1002BT
Approved for IMSA, ARCA and SCCA Competition Use	



FR1050 Dual Battery Disconnect Switch

The Dual Battery Disconnect Switch allows for two batteries to operate independent of one another, or for both to be in the ON or OFF position at the same time.

- Rated at 300 Amps continuous service, and 1000 Amps for 5 second surges.
- 12 or 24 Volts
- IP 54 Rating
- 300 Amps Continuous
- 1000 Amps Surge for 5 Seconds
- Silver Plated Contacts

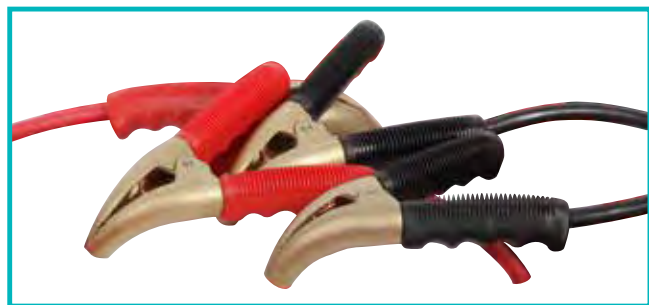


Description	Dual Battery Disconnect Switch
Part No.	FR1050
Warranty	1 Year
Voltage	12V and 24V
Max Continuous Current	300 Amps
Max Surge Current	1,000 Amps (5 seconds)
Environmental Protection Rating	IP54
Operating Temperature Range	-40°C to +50°C -40°F to +122°F
Internal Contacts:	Silver Plated Copper
Contact Terminals	Copper
Contact Hardware	Brass
Stud Diameter	M10 Available
Stud Length	0.5" (1/2 in)
Tightening Torque	11-13 ft-lbs
Switch Modes	4 Modes: #1 On, #2 On, Both On, Both Off



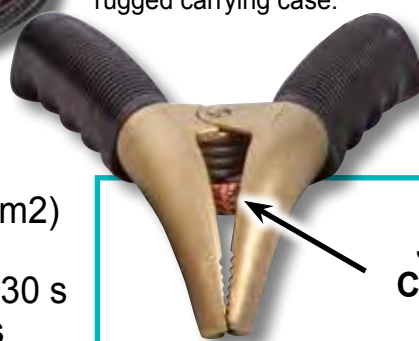
Electrical Accessories

FR1070 BA Professional Jumper Cable



The Professional Jumper Cables are heavy-duty, 23 feet long, and ultra-flexible. Robust brass clamps designed to hold firm and thick, yet flexible cables safely allow you to jumpstart your truck. The set comes with one black and one red cable with clamps. Conveniently stores in a rugged carrying case.

- Nominal Voltage 12V/24V
- Clamps Material: casting brass
- Cable Material: copper (cross section 50 mm²)
- Cable Insulation: highly flexible PVC
- Max Current Carrying Capacity: 1000 A for 30 s
- Short-term Current Capacity: 2000 A for 5 s
- Ideal for Extreme Cold Temperatures



**Strong Brass
Jaw Clamps with
Copper Connection
for Maximum
Continuous Current**

FR1060 Battery Relocation Kit

Flaming River® has introduced a new battery relocation kit. The 20 foot 1/0 gauge positive cable and 8 foot 1/0 gauge ground cable are flexible, soft and easy to work with. The cables are rated for 250 amps and have more than 4,700 ultra-fine strands for low resistance and flexibility. "No crimp" ends simplify the installation process and all hardware is included for an easy install.

Kit Contains:

- 20 feet of red (positive), 8 feet of black (ground) 1/0 gauge ultra-flexible cable
- (12) cable clamps and (12) self-tapping hex drive sheet metal screws to mount the cable to the vehicle
- (6) heavy duty "no crimp" cable ends • (1) negative battery clamp terminal • (1) positive battery clamp terminal
- (6) waterproof heat shrink sleeves to seal the cable ends
- WEIGHT SAVINGS - 1/0 gauge cable in this kit is 50% lighter than standard 1/0 gauge cable
- IMPROVED FLEXIBILITY - Each cable is "Ultra-flexible".
- Cables are rated for 250 amps and have 4700 ultra-fine strands for low resistance and flexibility.
- All hardware is included for installation



FR1061 Alternator Cable



Installation Kit with 250 Amp Fuse

FR1062FS 250 Amp Fuse
for 0 to 4 gauge cable

Kits Includes:

- 250 Amp fuse and fuse holder
- zero gauge positive and ground cables
- no crimp cable ends

FR1061CE No Crimp Battery Cable Ends (Pair)



Battery Terminal Ends FR1061TM



Heavy-duty set-screw style "no crimp" cable ends for installing or relocating a vehicle battery or alternator. Two (2) ends included in this kit.



Ordering

REQUEST FOR QUOTATION

Please let us know your required part number, amp rating and quantity.

We will prepare a quotation specific to your needs:

Part No.

Amperage Rating

Quantity

Company

Contact Name

Phone No.

E-Mail

Web Site

PAYMENT:

We accept Visa, Mastercard and Discover. C.O.D. (US Funds).

Certified check or money order is also available at an additional cost.

DELIVERY:

Orders ship within 3 to 5 business days using UPS ground freight or other comparable service.

AIR SHIPMENT:

Next Day Air, Second Day Air and Three Day Select services are available upon request. These will ship the next business day and are subject to special handling charges. Credit card only for air shipments. Bill to and shipping address must match for address verification.

RETURNS:

Product returns and exchanges must be called in for authorization prior to return and shipped freight prepaid with a copy of the invoice. (Any shipment received without paperwork will be refused.) Returns are subject to a 15% handling fee (minimum \$15.00). Freight and polishing charges are non-refundable. Returns/Exchanges must be made within 30 days of purchase date from Flaming River®. Product that has been cut, scratched, painted or installed cannot be returned. Returns must be made to the distributor where purchased.

ORDERING

Phone:

Orders can be placed by calling our toll-free number:

1-800-648-8022

Hours: 8:30am - 5:00pm EST

Fax:

Orders can be placed using our toll-free,

24-hour fax order line: 1-800-243-5263

(1-800-24-FLAME)

Web: www.flamingriver.com

WARRANTY DISCLAIMER:

Flaming River's® Limited Warranty

Flaming River® warrants its products to be free from defects in material and workmanship for a period of one (1) year after the date of purchase, except that: All steering columns are warranted for a period of three (3) years from the date of purchase. The Big Switch (part number FR1044) is warranted for a period of three (3) years from the date of purchase, provided that it is not mounted with a steel bracket and provided further that it is adequately protected from environmental conditions. All electrical products other than the Big Switch are warranted for a period of ninety (90) days from the date of purchase. Flaming River's® warranty liability is limited to the replacement of defective products. Flaming River® is not liable for any labor costs associated with any warranty claim, or for any incidental or consequential damages. Improper installation, abuse, racing, and/or modification of the products voids this warranty. No warranty of merchantability or fitness for a particular purpose is made by Flaming River® with respect to any of its products.

Warnings and Recommendations

It is the customer's responsibility to determine the suitability of a given Flaming River® product for the customer's uses. Likewise, it is the customer's responsibility to install a Flaming River® product. Contact the vehicle manufacturer whenever installing a switch to confirm the appropriateness of using such a switch and the recommended placement of the switch on the vehicle. Use qualified chassis specialists for the installation of all steering related components. Be aware that the installation of certain Flaming River® products may adversely impact a manufacturer's warranty with respect to certain vehicles and other manufactured goods. Flaming River® will repair or replace any product found to be defective in material or workmanship. Improper installation, abuse, racing and/or modification VOID WARRANTY. Flaming River® is not responsible for any labor costs associated with any warranty.

Note: The information contained in this catalog is correct to the best of our knowledge and belief, having been compiled from reliable and official sources of information. However, Flaming River Industries, Inc.® cannot assume responsibility for possible error.



Flaming River Industries, Inc.®
800 Poertner Dr. Berea, Ohio 44017
440-826-4488 • Fax 440-826-0780 • Toll Free 1-800-648-8022
www.flamingriver.com